

HMI 2500 W/DXS

HMI double-ended



Product family features

- Color temperature: approx. 6,000 K (Daylight)
- High color rendering index: $R_a >$
- Very bright with luminous flux up to 2.3 million lumen
- Very high luminous efficacy up to 100 lm/W
- Robust design with eXtreme Seal (XS) technology, allowing up to 450°C at the pinch seal
- Hot restart capability



Product datasheet

Technical data

Electrical data

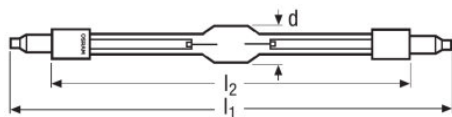
Lamp wattage	2500 W
Nominal wattage	2500.00 W
Nominal voltage	115 V
Nominal current	25.6 A
Ignition voltage cold/hot	20/45 kVp ¹⁾

¹⁾ Max. 55 kV

Photometrical data

Nominal luminous flux	240000 lm
Color temperature	6000 K
Color rendering index Ra	90
Luminous efficacy	96 lm/W

Dimensions & weight



Diameter	31.5 mm
Length	355.0 mm
Mounting length	290.0 mm
Electrode gap cold	14.0 mm

Temperatures & operating conditions

Max. permitted ambient temp. at base	450 °C
--------------------------------------	--------

Lifespan

Lifespan	500 h
----------	-------

Additional product data

Product datasheet

Base (standard designation)	SFa21
-----------------------------	-------

Capabilities

Burning position	Other
Cooling	Convection

Environmental information

Information according Art. 33 of EU Regulation (EC) 1907/2006 (REACH)	
Date of Declaration	05-03-2024
Primary Article Identifier	4050300932095 4008321182197
Candidate List Substance 1	No declarable substances contained
Declaration No. in SCIP database	In work

Country specific information

Product code	METEL code	SEG-No.	STK number	UK Org
4008321182197	OSRHMI2500DXS	-	4836426	-

Product datasheet

Safety advice

Because of their high luminance, UV radiation and high internal pressure during operation, HMI lamps may only be operated in enclosed lamp casings specially constructed for the purpose. Appropriate filters must ensure that UV radiation is reduced to an acceptable level. Mercury is released if the lamp breaks. Special safety precautions must be taken. Information on safety and handling is available on request or can be found in the leaflet included with the lamp or in the operating instructions.

Logistical Data

Product code	Product description	Packaging unit (Pieces/Unit)	Dimensions (length x width x height)	Volume	Gross weight
4008321182197	HMI 2500 W/DXS	Shipping carton box 1	561 mm x 136 mm x 119 mm	9.08 dm ³	599.00 g

The mentioned product code describes the smallest quantity unit which can be ordered. One shipping unit can contain one or more single products. When placing an order, for the quantity please enter single or multiples of a shipping unit.

Disclaimer

Subject to change without notice. Errors and omission excepted. Always make sure to use the most recent release.