

# LEDinspect FLEXIBLE HEAD TORCH



## Flexible Head Band

Soft padding and additional adjustable strap for optimal wearing comfort



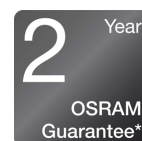
## Up to 115 Lumen

Three light functions: Up to 115 lm ( high, up to 50 lm ( low) and a red flashing function at the rear



## Approx. 1.5 hours charging time

With a charging time of only approx. 1.5 hours, this OSRAM lamp is quickly ready for use again



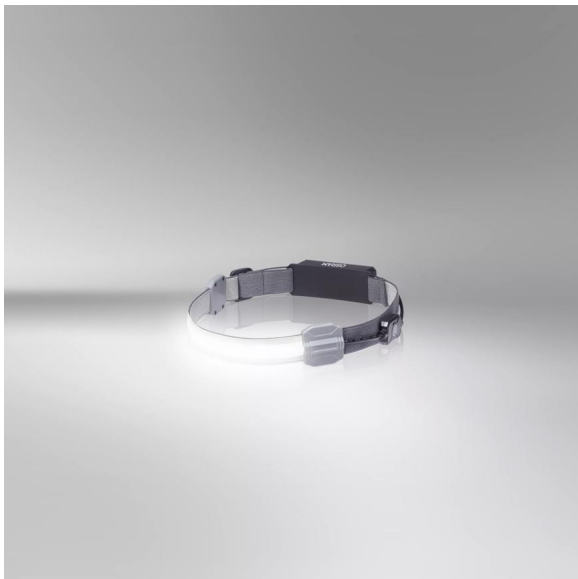
## 2-year OSRAM Guarantee\*

Systematic quality assurance measures underpin the premium workmanship and functionality of our products. Innovative technology and excellent quality really pay dividends for our customers.

### Light is versatile

This high-quality flexible head torch from OSRAM is perfect for professional and private use. With three light functions - high up to 115lm, low up to 50lm and a red flashing function at the rear, this head torch offers different setting options for a variety of tasks. The illumination integrated directly into the individual adjustable headband enables a wide and even distribution of light and can provide better illumination of the working area. The rechargeable battery allows up to 4.5h of operation at high power or up to 5.5h at low power and with a charging time of only approx. 1.5 hours, this OSRAM lamp is also quickly ready for use again. An USB

## Product family datasheet



Micro B charging cable to recharge the lithium battery is included in the scope of supply. In accordance with IP 42 protection rating, this head torch has protection against ingress of dust particles and against splashing water. The LEDinspect Flexible Head Torch has soft pads inside and additionally an adjustable strap for optimal wearing comfort. With a weight of only 62g and the flexible, foldable design, the product is easy to store and transport, making it ideal as a light for craft work, car repairs and everyday use. OSRAM also provides a 2-year guarantee\*

\*For precise conditions please refer to:  
[www.osram.com/am-guarantee](http://www.osram.com/am-guarantee)

Product family datasheet

Technical data

	Product information	General Product Information	Electrical Data	
Product description	Application (Category and Product specific)	Global order reference	Nominal voltage	Nominal wattage
INSPECTION LAMP	LED inspection lights	LEDIL414	3.7 V	3 W
	Photometric Data			Physical Attributes & Dimensions
Product description	Light color LED	Nominal luminous flux	Color temperature	Height
INSPECTION LAMP	White	115 lm	6000 K	25.0 mm
				LED module information
Product description	Width	Length	Product weight	Number of LEDs per module
INSPECTION LAMP	25.0 mm	245.0 mm	62.00 g	1
	Colors & materials	Lifetime Data	Additional product data	
Product description	Base color	Guarantee	Number of included batteries	Type of Battery
INSPECTION LAMP	Black / Orange	2 years	1	Rechargeable
	Capabilities	Logistical data	Environmental & Regulatory Information Information according Art. 33 of EU Regulation (EC) 1907/2006 (REACH)	
Product description	Technology	Watt hour per battery	Candidate list substance 1	CAS No. of substance 1
INSPECTION LAMP	LED	3.70	Lead	7439-92-1
Product description	Safe use instruction	Declaration no. in SCIP database		
INSPECTION LAMP	The identification of the Candidate List substance is sufficient to allow safe use of the article.	3ee5100c-84cd-4784-ba6a-aabf9f12ebcb		

Download Data

File	
	User instruction GPRS_Safety symbols instructions

Legal advice

Application advice:For more detailed application information and graphics please see product datasheet and the user instruction.\*for precise conditions please refer to:

[www.osram.com/am-guarantee](http://www.osram.com/am-guarantee)

Application advice

For more detailed application information and graphics please see product datasheet.

Disclaimer

Subject to change without notice. Errors and omission excepted. Always make sure to use the most recent release.